

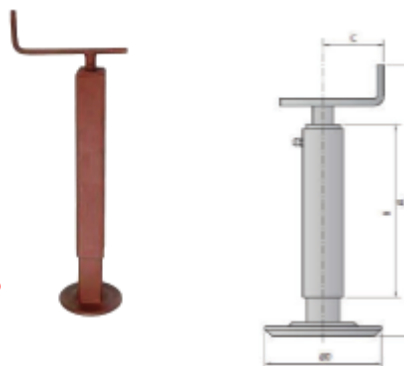


**STAMPATI IN FERRO**  
**IRON PARTS**

## SERVOTIMONI

BEQUILLE CRIC  
TELESCOPIC PARKING JACK  
ABSTELLSTÜTZE  
PIE APOYO TELESCOPICO

**N.B.: Il colore può variare a seconda della disponibilità in magazzino  
The color depending on the availability in the stock**



Articolo	Portata Statica Static capacity	Corse Stroke mm	Misure mm LxSxH Measures Tubo Tube	ØVite Screw	A	B	C	D
00011	500	260	50x3x400	18	530	390	150	150
00012	500	300	50x3x500	18	600	470	150	150
00013	500	400	50x3x600	18	700	570	150	150
00015	600	300	60x3x500	20	600	470	160	150
00016	600	400	60x3x600	20	700	570	160	150
00017	1000	300	70x3x500	24	600	500	160	190
00018	1600	300	80x3x500	28	620	500	180	190

## SERVOTIMONI A RUOTA CON RIBALTAMENTO A MOLLA

BEQUILLE A ROUE AVEC BLOPAGE PAR RESSORT  
WHEEL JACK WITH SPRING LOCK  
STUTZRAD MIT FEDERVORRICHTUNG  
PIE DE APOYO A RUEDA BLOQUEO CON RESORTE



Articolo	Portata Statica Static capacity	Corse Stroke mm	Misure mm LxSxH Measures Tubo Tube	ØVite Screw	B	Ruota ferro Steel wheel	Ruota gomma Rubber wheel
05546	500	220	50x3x400	18	400	230x60	
05547	500	220	50x3x400	18	400		200x50
00019	600	220	60x3x400	20	400		200x50
00020	800	220	60x3x400	20	400		250x65
00021	600	220	60x3x400	20	400	230x60	
00022	1000	280	70x3x450	22	450		250x60
00023	1000	280	70x3x450	22	450	280x80	

## MOLLA RICAMBIO SERVOTIMONE

SPRING REPLACEMENT  
RESSORT REMPLACEMENT  
FEDERERSATZ

Articolo	Descrizione Description
02628	Molla ricambio per art. 00019; 00021 spring replacement for art. 00019; 00021



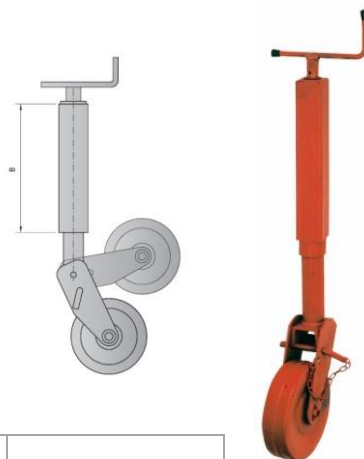
## SERVOTIMONI A RUOTA CON RIBALTAMENTO A SPINA

BEQUILLE A ROUE AVEC BLOCAGE A VERROU

WHEEL JACK WITH PIN LOCK

STUTZRAD MIT SPERRBOLZ

PIE DE APOYO CON RUEDA RUEDA BLOQUEO CON AGUJA



**N.B.: Il colore può variare a seconda della disponibilità in magazzino**  
**The color depending on the availability in the stock**

Articolo	Portata Statica Static capacity	Corse Stroke mm	Misure mm LxSxH Measures Tubo Tube	B	Ruota ferro Steel wheel	Ruota gomma Rubber wheel
00024	400	190	50x3x330	330		200x65
00025	1000	300	70x3x460	460	275x70	
00791	800	220	60x3x400	400	220x60	

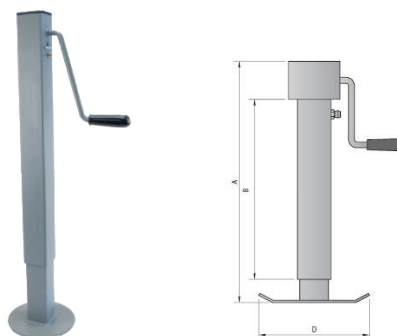
## SERVOTIMONE CON MANOVELLA LATERALE CON QUADRO

BEQUILLE AVEC MANIVELLE LATERALE

PARKING JACK WITH LATERAL HANDLE

STUTZFUSS MIT SEITLICHER KURBEL

PIE DE APOYO CON MANIVELA LATERAL



Articolo	Portata Statica Static capacity	Corse Stroke mm	Misure mm LxSxH Measures Tubo Tube	ØVite Screw	A	B	D
00792	800	320	60x3x600	20	600	570	160
00718	800	320	50x3x600	20	600	570	160

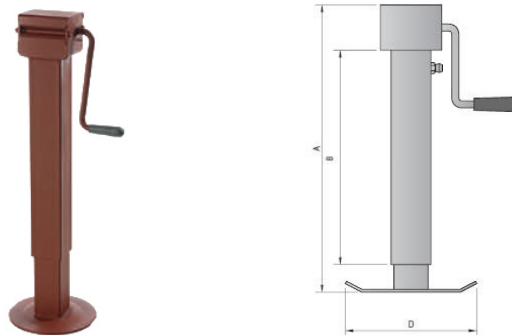
## SERVOTIMONE CON MANOVELLA LATERALE CON QUADRO

BEQUILLE AVEC MANIVELLE LATERALE

PARKING JACK WITH LATERAL HANDLE

STUTZFUSS MIT SEITLICHER KURBEL

PIE DE APOYO CON MANIVELA LATERAL



Articolo	Portata Statica Static capacity	Corse Stroke mm	Misure mm LxSxH Measures Tubo Tube	ØVite Screw	A	B	D
00793	2500	280	70x3x500	28	570	500	190
00794	2500	280	80x3x500	28	570	500	190

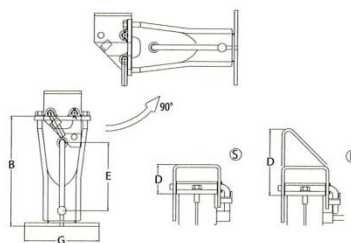
## SERVOTIMONE TIPO CRIC CON ATTACCO RIBALTABILE

BEQUILLE CRIC FIXATION BASCULANTE

PARKING JACK TIPPING CONNECTION

STUTZFUSS MIT KLAPPBAREM BEFESTIFUNGSTEIL

PIE DE APOYO TIPO CRIC - ENGANCHE BASCULANTE



Articolo	Portata statica Static capacity	Corse Stroke mm	ØVite Screw	B	D	E	G
01716	700	200	20	400	70	230	220

## SERVOTIMONE IDRAULICO

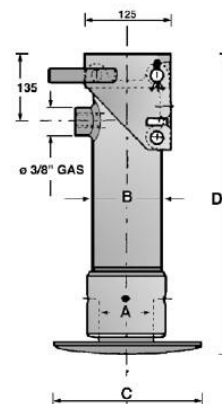
BEQUILLE HYDRAULIQUES

HYDRAULIC JACKS

HYDRAULISCHE STUTZFUSSE

SERVOMANDOS DE DIRECCION

HIDRAULICOS -VUELA CON RESORTE



Articolo	A int	B Est	C mm	D mm	Portata	LT	KG
05028	68	90	210	421	190	1,5	18

## GANCIO TENDITELONE IN PLASTICA

NYLON ROPE TIGHTENER

Articolo	Descrizione Description
00893	Tendi telone in plastica Nylon rope tightener



## TENDIFUNE IN LAMIERA

STEEL CABLE HOOK

Articolo	Descrizione Description	Altezza Height	Larghezza Width mm
00008	Tendifune lamiera Steel cable hook	25 mm	64 mm



## TENDIFUNE

CABLE TURNBUCKLE

TENDER DE CORDE

HAKEN

Articolo	Descrizione Description	Sezione section	Tipo Type
00009	Tendifune Cable turnbuckle	8 mm	Leggero Lightweight
00010		13 mm	Pesante Heavy





## OCCHIONI GIREVOLI

TOWING EYES

ANNEAUX TOURNANTS

DREHBARE ZUGOSEN

ARGOLLA DE ENGANCHE GIRATORIO

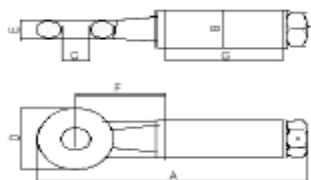


FOTO 1

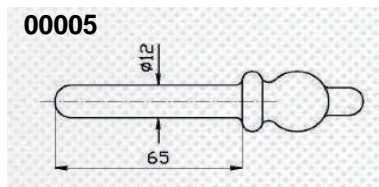


FOTO 2

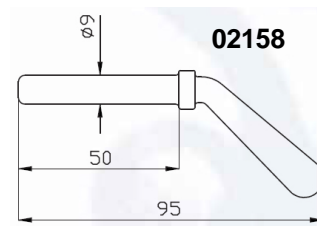
Articolo	Carichi Load	Carichi - Load		Dimensioni (mm)							N° omologazione Approval nr.
	Trainabile Towed	Verticale Vertical	Dianamico Dinamic	A	Ø B	Ø C	D	E	F	G	Tipo - type
<b>Foto 1: OCCHIONI OMOLOGATI (PER OMOLOGAZIONI ITALIANE); Standard (for italian homologations)</b>											
06072	6000	-	-	335	60	35	95	30	110	145	E - 1398
06073	3000	250	1000	265	42	22	62	20	90	110	E1 -1483
03352	6000	500	3000	335	60	35	95	30	110	145	E2 - 1406
03417	6000	1500	4500	335	60	35	95	30	110	145	E3 - 1407
02149	12000	-	-	370	63,5	45	109	32	130	145	F - 1399
06074	20000	-	-	450	76	68	152	42	170	150	F1 -1400
02391	14000	2000	5050	410	70	50	120	35	150	150	F2 - 1408
06075	20000	2500	5000	472	76	76	160	42	190	150	F3- 1409
06076	20000	2500	8800	500	89	76	160	42	190	170	F3 - 1700
<b>Foto 2 : VECCHIA OMOLOGAZIONI; old approval</b>											
00001	-	-	-	273	42	30	84	25	98	110	Piccolo
00002	6000	-	1100	327	51	45	104	30	96	150	E 990 Ø51
00003	6000	-	2300	336	63	45	105	36	98	145	E mon. 988 Ø63
00004	1500	-	1500	345	57	45	45	95	35	120	DGM RA-702F96
06077	14000	1700	-	324	60	50	120	35	90	135	Mod Francia
00790	30000	3500	-	379	82	50	122	35	110	150	ISO - 30 t
00789	3000	600	-	240	42	85	-	-	98	-	Grezzo
00671	12000	-	2090	339,5	63	45	112	43	98	146	F 987 Ø63

## CHIAVISTELLO PER SUPPORTO LATERALE

BOLT FOR SIDE SUPPORT

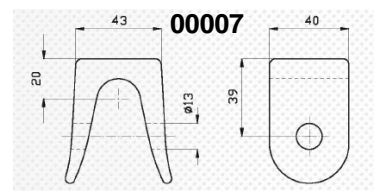


Articolo	Descrizione Description
00005	Chiavistello per supporto laterale Ø 12mm Bolt for side support diam. 12
02158	Chiavistello per supporto laterale Ø 9mm Bolt for side support diam. 9

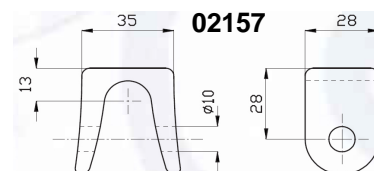


## SUPPORTO CERNIERA POSTERIORE

SIDE SUPPORT BACK  
CHARNIERE ARRIERE  
REAR HINGE  
HENCKSCHARNIER  
CHARNIERA POSTERIOR



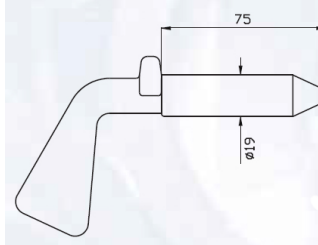
Articolo	Descrizione Description
00007	Supporto cerniera posteriore Side support block
02157	Supporto cerniera posteriore leggera Side support block



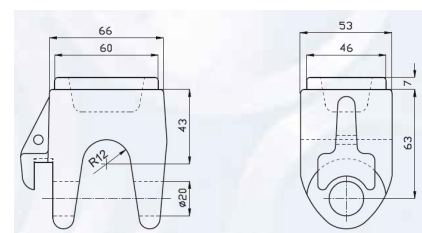
## MANIGLIA F/U LEGGERO

F/U HANDLE

Articolo	Descrizione Description
03756	Maniglia f/u leggero Lightweight f/u handle
03757	bocca di lupo F/D Ø 60 wolf mounth F/D Ø 60



03756

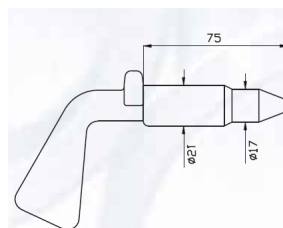


03757

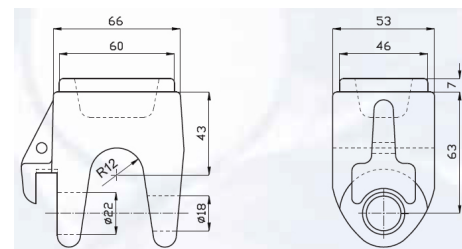
## MANIGLIA F/U PESANTE

F/U HANDLE

Articolo	Descrizione Description
03758	Maniglia f/u pesante heavy handle
03759	bocca di lupo F/D Ø 60 wolf mounth F/D Ø 60



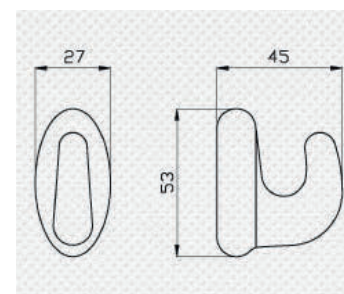
03758



03759

## TENDICATENA CON PIASTRA

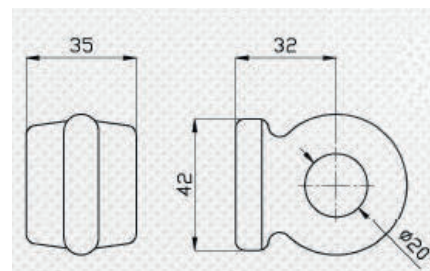
CROCHET CHAINE  
HOOK CHAIN  
KETTEHAKEN  
GANCHO CADENA



Articolo	Descrizione Description
01720	Tendicatena con piastra Chain stretcher

## TENDICATENA CON PIASTRINA CHIUSO

CROCHET CHAINE  
HOOK CHAIN  
KETTEHAKEN  
GANCHO CADENA



Articolo	Descrizione Description
00906	Tendicatena con piastra chiuso Closed chain stretcher

## TENDICATENA ESTERNO NORMALE

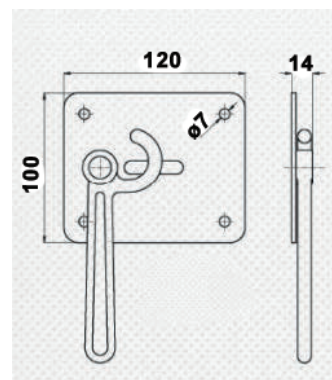
TENDEUR DE CHAIN EXTERIEUR  
OUTER CHAIN STRETCHER  
HAKENVERSCHLUSS  
TENSOR DE CADENA EXTERCIOR NORMAL



Articolo	Descrizione Description	Lato Side
00822	Tendicatena esterno Right outer chain stretcher	Destro Right
00822/S	Tendicatena esterno Left outer chain stretcher	Sinistro Left

## TENDICATENA ESTERNO CON PIASTRINA TIR

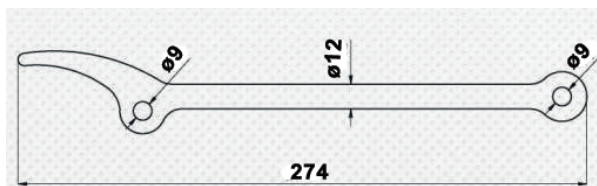
TENDEUR DE CHAIN EXTERIEUR  
OUTER CHAIN STRETCHER  
HAKENVERSCHLUSS  
TENSOR DE CADENA EXTERCIOR



Articolo	Descrizione Description	Lato Side
00823	Tendicatena con piastra tir	Destro Right
00823/S	Tendicatena con piastra tir	Sinistro Left

## LEVA TENDICATENA

CHAIN STRETCHER  
LEVIER TENDEUR DE CHAINE  
LEVER KETTENSANNHEBEL  
PALANCA TENSOR DE CADEN



Articolo	Descrizione Description	Lunghezza mm Length mm	Ø A	Ø B
00086	Leva tendicatena Chain stretcher lever	274 mm	9 mm	9 mm

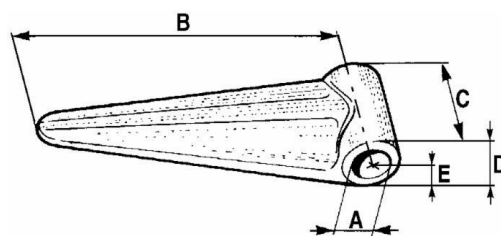


## CERNIERE PIATTE E BOMBATE

CHARNIERE PLATE  
HINGESCHARNIER  
CIERRE PARA REJA

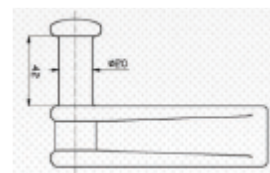


Articolo	Tipo Type	A MM	B MM	C MM	D MM	E MM	Foto Picture
00894	Micron	9	65	25	18	8	A
00797	Mignon	12	55	30	19	11	A
00027	Leggerissima Lightweight	12	80	30	12	11	A
00028	Leggera light	14	95	33	14	13	A
00029	Leggera light	12	90	30	12	11	B
00030	Media medium	14	110	30	12	13	B
00031	Pesante Heavy	16	125	40	16	15	B
00799	Pesantissima Very heavy	17	125	42	17	16	B



## CERNIERE POSTERIORI

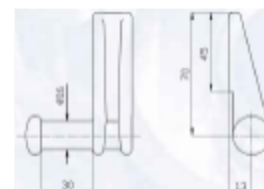
REAR HINGE  
CHARNIERE ARRIERE  
HECKSCHARNIER  
CHARNIERA POSTERIOR



00006

Articolo	Descrizione Description
00006	Cerniera posteriore Ø 20mm DX Rear right board's latch diam. 20 mm
00006/S	Cerniera posteriore Ø 20mm SX Rear left board's latch diam. 20 mm
02155	Cerniera posteriore leggera Ø 16mm SX Rear left board's latch diam. 16 mm
02156	Cerniera posteriore leggera Ø 16mm DX Rear right board's latch diam. 16 mm

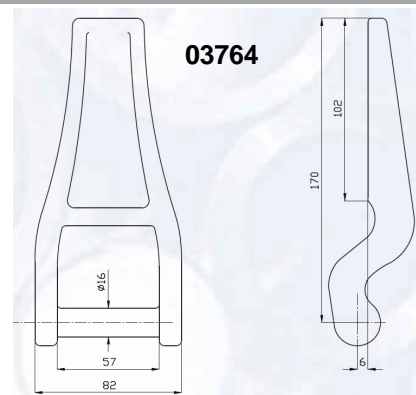
02155



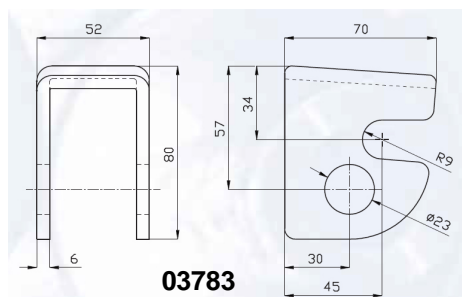
## CERNIERA EMILIA

EMILIA HINGE

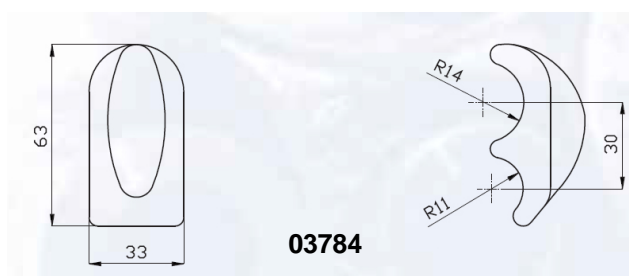
Articolo	Descrizione Description
03764	Cerniera Emilia Ø 15 Emilia hinge hole Ø 15
03783	Pezzo forato roccia roccia drilled part
03784	Levetta roccia corta short roccia level



03764



03783

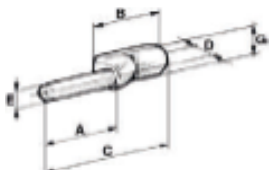


03784



## PERNI PER CERNIERE

PINS FOR HINGES



Articolo	Applicabile For Art.	A Mm	B MM	C MM	D MM	G MM	E MM
00895	894	26	36	62	10	21	8
00032	27-29-797	43	50	93	14	27	11
00033	28-30-1161	47	50	97	14	27	13
00034	31-798	50	75	107	16	30	15
00800	799-801	52	65	117	16	30	16

## CERNIERA PIATTA SAGOMATA CON BORDINO

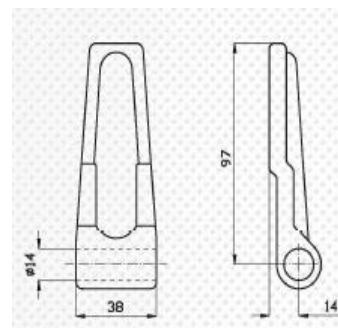
CHARNIERE PLATE

HINGE

SCHARNIER

CIERRE PARA REJA CON BORDE

Articolo	Descrizione Description
01161	Cerniera piatta sagomata con bordino Flat plate hinge



## CERNIERA PIATTA IN LAMIERA

CHARNIERES PLATES

HINGES AND PIN

SCHARNIERE UND BOLZEN

CIERRES PLANAS Y PERNOS PARA CIERRES

Articolo	Descrizione Description	Ø foro mm Ø hole mm
02513	Cerniera piatta lamiera Zinc-plated flat hinge with holes	9



## CERNIERA PIATTA CON FORI ZINCATA

CHARNIERE PLATE

HINGE

SCHARNIER

CIERRE PARA REJA

Articolo	Descrizione Description	Ø foro mm Ø hole mm
02817	Cerniera piatta con fori zincata Zinc-plated flat hinge with holes	9



## PERNO PER CERNIERA IN LAMIERA

PIN FOR PLATE HINGE

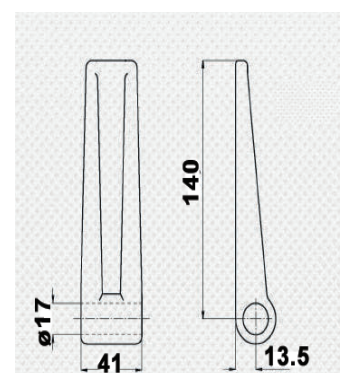
Articolo	Descrizione Description	Ø mm	Per art. For art.
02514	Perno per cerniera 8-mm pin for plate hinge	8	2513/2817



## CERNIERA "VIBERTI" DIRITTA CORTA

UPRIGHT SHORT HINGE "VIBERTI" TYPE

Articolo	Descrizione Description
00798	Cerniera "Viberti" diritta e corta Upright short hinge "Viberti" type



## CERNIERA BILATERALE TIPO "SALERNO"

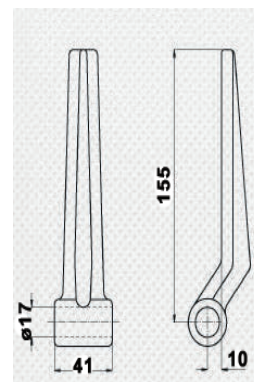
CHARNIERE BILATERALE TYPE "SALERNO"

HINGE BILATERAL TYPE "SALERNO"

SEITLICHES SCHARNIER TYP "SALERNO"

CIERRE BILATERAL TIPO "SALERNO"

Articolo	Descrizione Description
00801	Cerniera bilaterale "Salerno" Bilateral hinge "Salerno" type



## CERNIERA MODELLO "UNIC 80"

HINGE "UNIC 80" TYPE

Articolo	Descrizione Description
00802	Cerniera mod. "Unic 80" Hinge "Unic 80" type



## CERNIERA BILATERALE TIPO "ROMA"

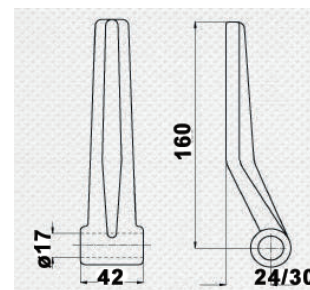
CHARNIERE BILATERALE TYPE "ROME"

HINGE BILATERAL TYPE "ROME"

SEITLICHES SCHARNIER TYP "ROME"

CIERRE BILATERAL TIPO "ROME"

Articolo	Descrizione Description
00817	Cerniera bilaterale "Roma" Bilateral hinge "Roma" type



## CERNIERA NORMALE SOTTOSOPRA COMPLETA

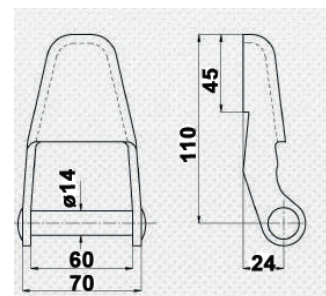
CHARNIERE AVEC SUPPORT

HINGE WITH STIRRUP

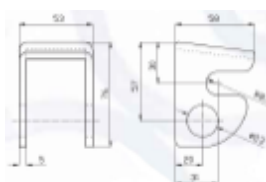
SCHARNIER MIT LANGEM BUGEL

CIERRE CON BRIDA

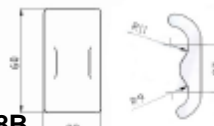
Articolo	Descrizione Description
00048	Cerniera normale sottosopra completa Complete upside-down hinge
00048A	Pezzo Forato perforated piece
00048B	Levetta OM om lever



00048A



00048B



## CERNIERA PESANTE SOTTOSOPRA COMPLETA

CHARNIERE AVEC SUPPORT LONG

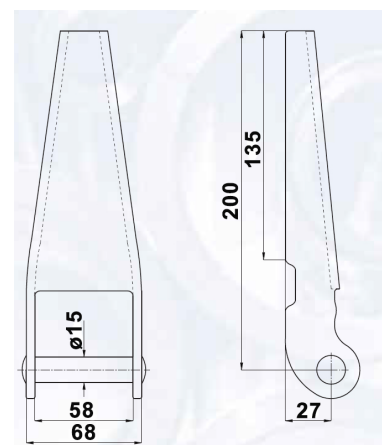
HINGE WITH LONG STIRRUP

SCHARNIER MIT LANGEM BUGEL

CIERRE CON BRIDA LARGA



Articolo	Descrizione Description
00049	Cerniera Pesante sottosopra Complete heavy upside-down hinge



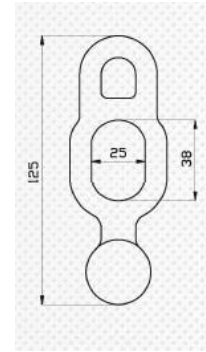
## DOPPIO ANELLO DI FERMO PER CERNIERE SOTTOSOPRA

DOUBLE ANNEAU DE FERMETURE POUR CHARNIERE DOUBLE

DOUBLE LINK OF LOCK FOR DOUBLE HINGES

DOPPELRING FUR DOPPELVERSCHLUSS

DOBLE ANILLO DE BLOQUE PARA CIERRAS

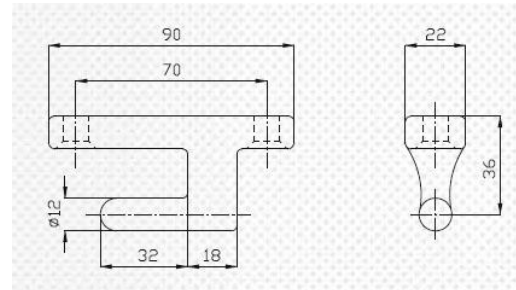


Articolo	Descrizione Description
01707	Doppio anello di fermo cerniere sotto sopra Double link of lock for double hinges

## PERNI SFILABILI PER SPONDE

UNTHREADABLE PINS

00824



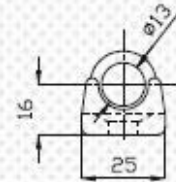
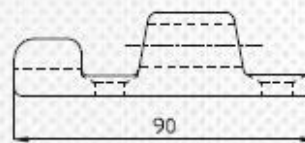
Articolo	Descrizione Description
00824	Perno sfilabile per sponde . Unthreadable pins
00826	Perno sfilabile per sponde. Unthreadable pins

## CERNIERA SFILABILE TIPO "TIR"

UNTHREADABLE HINGE TYPE "TIR"

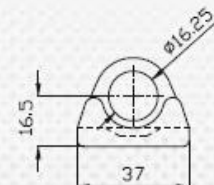
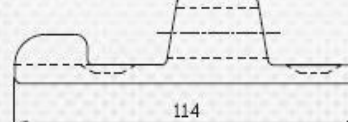


00825



Articolo	Descrizione Description
00827	PS perno art.00826 Unthreadable hinge type "tir" for pin art.00826
00825	PS perno art.00824 Unthreadable hinge type "tir" for pin art.00824

00827



## CERNIERA LEGGERA TIPO TIR 4100 IN ALLUMINIO

LIGHT HINGE TYPE "TIR 4100" IN ALUMINIUM

Articolo	Descrizione Description
00830	Cerniera leggera "tir4100" in alluminio Light hinge type "tir 4100" in aluminium



## PERNO ZINCATO DI MM.12 PER CERNIERA TIPO "TIR 4100"

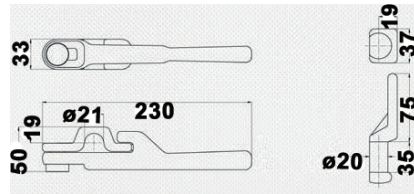
ZINCED 12-MM PIN FOR HINGE TYPE "TIR 4100"

Articolo	Descrizione Description
00831	Perno zincato per cerniera tipo "tir 4100" 12mm Zincated 12-mm pin for hinge type "tir 4100"





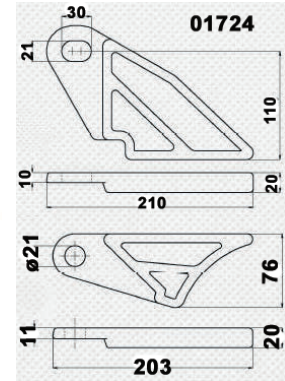
**CERNIERA UNIVERSALE TRILATERALE COMPLETA PER RIMORCHI RIBALTABILI**  
 COMPLETE UNIVERSAL HINGE



Articolo	Descrizione Description
00043	Cerniera trilaterale completa per rimorchi ribaltabili Complete universal hinge

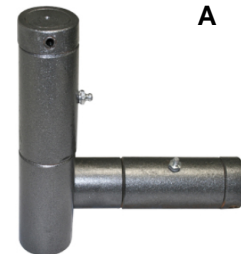
**CERNIERE DUE PEZZI PER CARRO BOTTE CON FONDO APRIBILE**  
 LEFT HINGE FOR TANK WAGON WITH OPENING BOTTOM

Articolo	Descrizione Description	Lato Side
01725	Cerniera due pezzi Right hinge for tank wagon with opening bottom	Sinistro
01724	Cerniera due pezzi Left hinge for tank wagon with opening bottom	Destra



**CERNIERA A LIBRO SUPERIORE/INFERIORE**  
 UPPER / LOWER FOLDING HINGE

Articolo	Descrizione Description	Foto Picture
03750	Cerniera a libro Ø 40mm superiore Folding hinge Ø 40mm upper	A
03751	cerniera a libro Ø40mm inferiore folding hinge Ø40mm lower	B
03752	cerniera a libro Ø50mm superiore folding hinge Ø50mm upper	A
03753	Cerniera a libro Ø50 mm inferiore Folding hinge Ø50 mm lower	B
03754	cerniera a libro Ø 60 mm superiore folding hinge Ø 60 mm upper	A
03755	cerniera a libro Ø 60 mm inferiore folding hinge Ø 60 mm lower	B



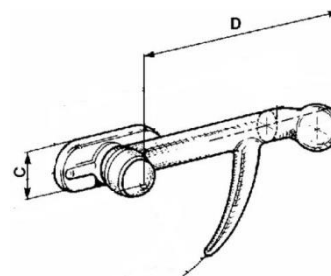
A



B

## CHIUSURA A PALLA

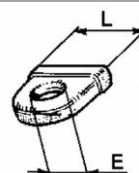
FERMETEURE AVEC VERROU  
EYEBOLT CLOSING  
VERSCHLUSS MIT BALLENGRIFF  
CIERRE A PELOTA CON TOPE



Articolo	Tipo Type	D mm	C mm	Golfaro Eye bolt	Chiusura Closing
00035	Leggerissima Very light	82	21	Art.36	Destra
00037	Leggera Light	107	25	Art.38	Destra
00039	Media Medium	130	30	Art.40	Destra
00041	Pesante Lunga Heavy long	165	37	Art. 42	Destra
00803	Pesante corta Heavy short	127	37	Art.42	Destra
02854	Leggerissima Very tight	82	21	Art.36	Sinistra
02855	Leggera Light	107	25	Art.38	Sinistra
02856	Media Medium	130	30	Art.40	Sinistra
02857	Pesante Lunga Heavy long	165	37	Art.42	Sinistra
02858	Pesante corta Heavy short	127	37	Art.42	Sinistra

## GOLFARI

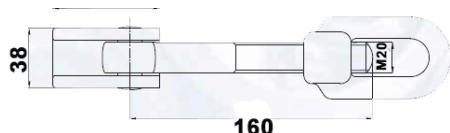
VERROU  
VLIFTING  
OSENRING STECKER  
ANILLODE ELEVACION



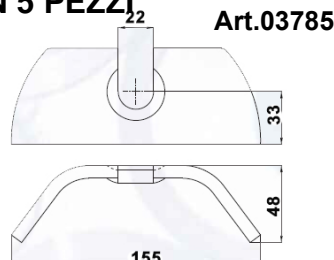
Articolo	E mm	L mm	Note Notes
00036	6	27	Per chiusura Art.35 - 2854 / For lock art.00035 - 2854
00038	12	32	Per chiusura Art.37 - 2855 / For lock art.00037 - 2855
00040	14	34	Per chiusura Art.39 - 2856 / For lock art.00039 - 2856
00042	17	40	Per chiusura Art.41-803 - 2857 2858 For locks art.00041-00803 - 02857 - 02858

## CHIUSURA PER FONDO APRIBILE DEL CARRO BOTTE IN 5 PEZZI

LOCK FOR TANK WAGON WITH OPENING BOTTOM

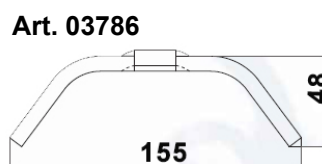


art. 01726

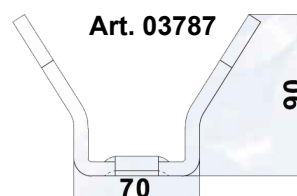


Art.03785

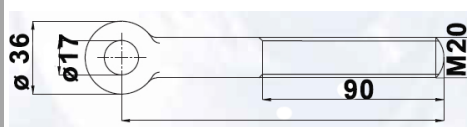
Articolo	Descrizione Description
01726	Chiusura apribile carro botte 5 pezzi lock for tank wagon opening bottom
03785	Staffa bloccaggio Piemonte Piemonte blocking bracket
03786	Staffa bloccaggio galletto Galletto blocking bracket
03787	Staffa export rinforzata Reinforced export bracket
03788	Perno forato 16x50 Drilled pin 16x50
03789	Tirante tie rod



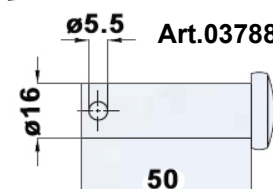
Art. 03786



Art. 03787



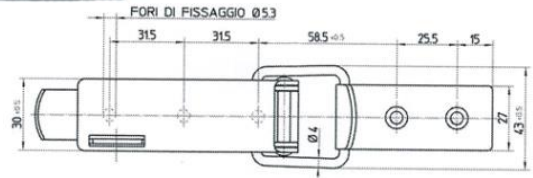
Art. 03789



Art.03788

**CHIUSURA CON LUCCHETTO**  
FASTENER WITH PADLOCK

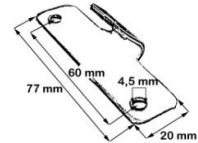
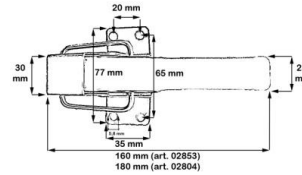
Articolo	Descrizione Description
02104	Chiusura con lucchetto Fastener with padlock



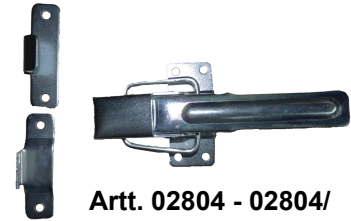
**NB: Chiedere disponibilità prima dell'ordine – Ask for availability**

**CHIUSURA CON RISCONTRO IN FERRO APRIBILE ZINCATA**  
OPENABLE ZINCED IRON FASTENER

Articolo	Descrizione Description
02853	Chiusura con riscontro apribile in ferro zincato Openable zinced iron fastener
02804	Chiusura con riscontro curvo in ferro zincato Zinced iron fastener
02804/	Chiusura con riscontro dritto in ferro zincato Zinced iron fastener



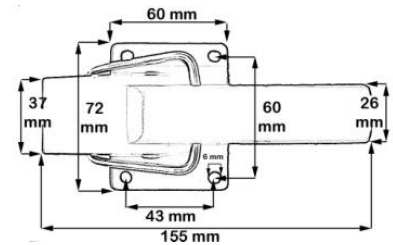
Art. 02853



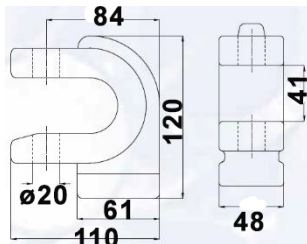
Artt. 02804 - 02804/

**CHIUSURA IN NYLON CON RISCONTRO**  
NYLON FASTENER

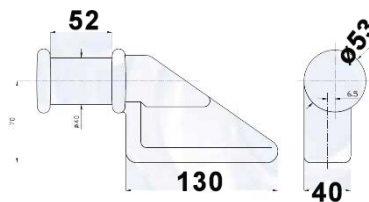
Articolo	Descrizione Description
01000	Chiusura in nylon con riscontro nylon fastener



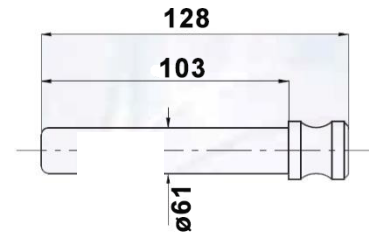
**CHIUSURA TIPO DUMPER**  
DOUMPER LOCK



03790



03791

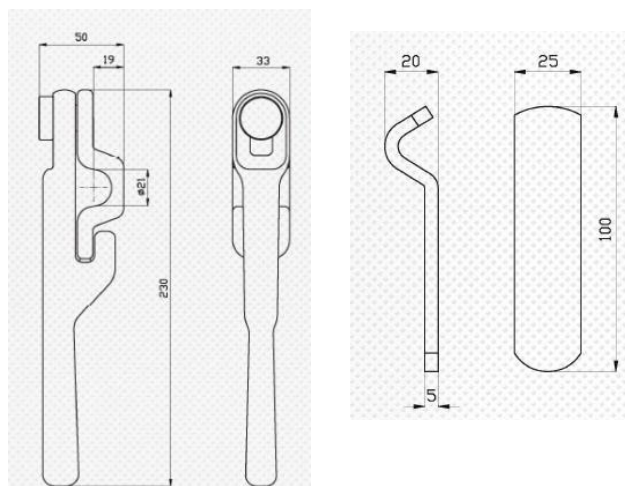


03792

Articolo	Descrizione Description
03790	Chiusura tipo dumper Dumper lock
03790/F	Chiusura tipo dumper Forata Dumper lock
03791/D	Piantone tipo dumper DX DX dumper column
03791/S	Piantone tipo dumper SX SX dumper column
03792	Spina per chiusura tipo dumper Pin for dumper lock type

## CHIUSURA AD ANELLO QUADRO CON PIASTRA

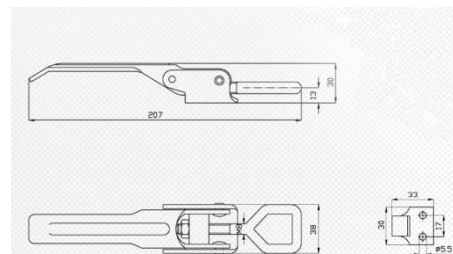
FERMETEURE AVEC PLAQUETTE  
SQUARE EYE CLOSING WITH PLATE  
VERSCHLUSS MIT PLATTCHEN  
CIERRE A ANILLO CUADRO CON PLATO



Articolo	Descrizione Description
00057	Chiusura ad anello quadro con piastra <i>square eye closing with plate</i>

## CHIUSURA REGISTRABILE CON/SENZA RISCONTRO

FERMETEURE REGLABLE  
ADJUSTABLE CLOSING  
VERSTELLBARER VERSCHLUSS  
CIERRE AJUSTABLE A OJO CON GANCHO



Articolo	Descrizione Description
01706	Chiusura registrabile con piastra riscontro <i>adjustable closing with reply</i>
01706/Z	Chiusura registrabile senza riscontro zincata <i>adjustable closing without reply zincated</i>



## CHIUSURA IN LAMIERA "CORIASCO"

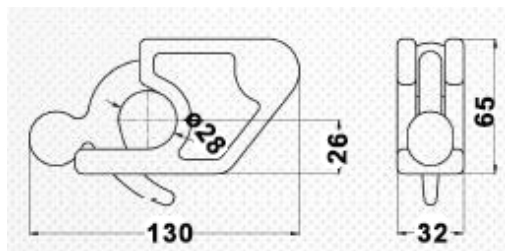
PLATE HINGE TYPE "CORISCO"

Articolo	Descrizione Description
00896	Chiusura in lamiera "coriasco" <i>plate hinge type "corisco"</i>



## CHIUSURA A BLOCCO LEGGERA

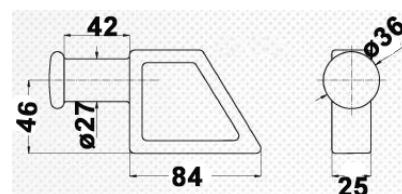
FERMETEURE A BLOC LEGERE  
LIGHT LINK-BLOC TYPE  
LEICHTER SPERRVERSCHLUSS  
CIERRES LIGEROS CON BLOQUE



Articolo	Descrizione Description
00901	Chiusura blocco leggera <i>light link-bloc type</i>

## PIANTONE LEGGERO

AXE  
LIGHT SHOOT TYPE  
LEICHTER BOLZ  
PERNO LIGERO



Articolo	Descrizione Description
00902	Piantone leggero <i>light shoot type</i>

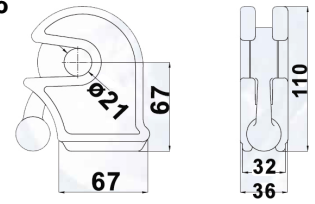


## CHIUSURA A BLOCCO DA 20/24 MM

FERMETURE A BLOC  
LINK BLOCK LOCKS  
SPERRVERSCHLUSS  
CIERRE CON BLOQUE

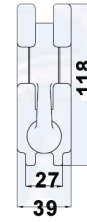
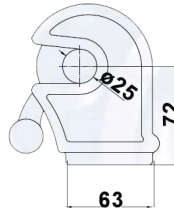


00056



Articolo	Descrizione Description
00056	Chiusura a blocco da 20mm Link block locks 20 mm
03793	Chiusura a blocco da 24mm Link block locks 24 mm

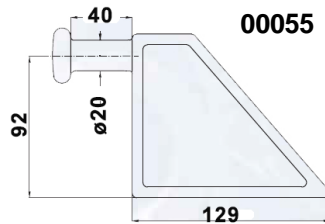
03793



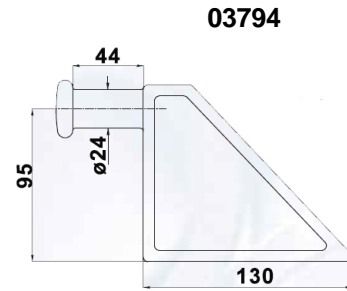
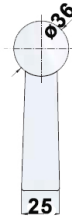
## PIANTONE DA 20/24MM

AXES  
PINS  
BOLZEN  
PERNOS

Articolo	Descrizione Description
00055	Piantone 20mm Pins 20mm
03794	Piantone 24mm Pins 24mm



00055

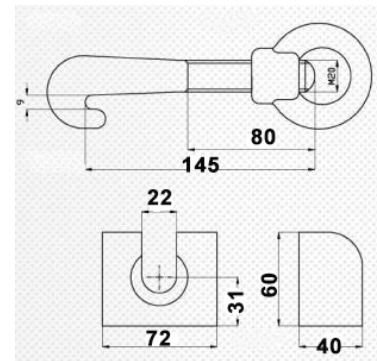


03794



## CHIUSURA REGISTRABILE PER CISTERNA

ADJUSTABLE LOCK FOR TANK WAGON

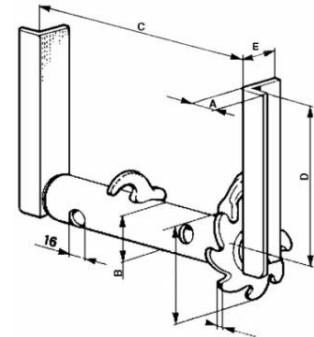


Articolo	Descrizione Description
00044	Chiusura per cisterna registrabile adjustable lock for tank wagon

## VERRICELLI

TREUILS  
WINCHES  
SEILWINDEN  
TORNOS

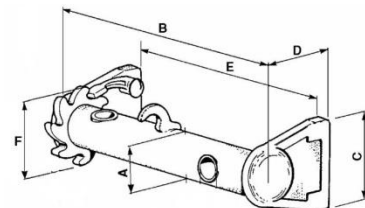
Articolo	Tipo Type	A MM	B MM	C MM	D MM	E MM
00047	Destro/dx	20	42	200	170	35
00047/S	Sinistro/sx	20	42	200	170	35
00045	Destro/dx	30	48	290	190	45
00045/S	Sinistro/sx	30	48	290	190	45
00046	Destro/dx	30	60	330	270	60
00046/S	Sinistro/sx	30	60	330	270	60



## VERRICELLI INDUSTRIALI

TREUILS INDUSTRIELS  
WINCH INDUSTRIAL TYPE  
SEILWINDE INDUSTRIE - TYP  
TORNOS INDUSTRIALES

Articolo	Tipo Type	A MM	B MM	C MM	D MM	E MM
01708	Destro/dx	48	245	105	177	210
01708/S	Sinistro/sx	48	245	105	177	210



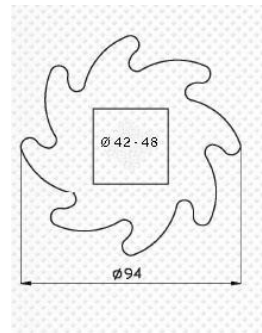
## ROSETTE 8 DENTI

COURONNE DENTEE EN TOLE

PLATE WHEEL

ZAHNKRANZ AUS STANZBLECH

ARANDELLA DENTELLADA DE CHAPA



Articolo	Ø Interno Ø internal MM	ØEsterno Ø external mm	Numero denti	Materiale Material
00050	42	94	8	Lamiera tranciata
00051	48	94	8	Lamiera tranciata

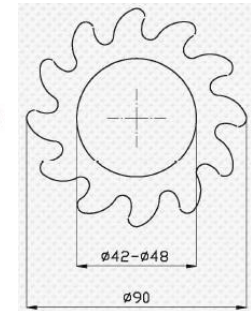
## ROSETTE 11 DENTI

COURONNE DENTEE EN TOLE

PLATE WHEEL

ZAHNKRANZ AUS STANZBLECH

ARANDELLA DENTELLADA DE CHAPA



Articolo	Ø Interno MM	ØEsterno MM	Numero Denti	Materiale material
00897	42	90	11	in acciaio stampato
00052	60	111	11	Lamiera tranciata

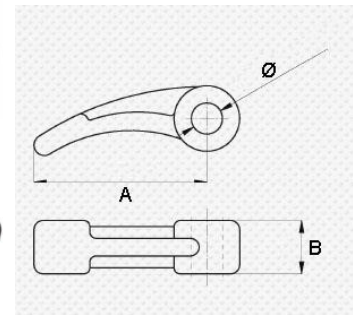
## SALTARELLI FORATI E NON FORATI

TOURILLON

PIN

FALLKLINKE

SALTAREL



Articolo	A MM	B MM	Ø MM	Note Notes
00053	48	18		Non forato
00898	48	18	10,5	Forato
00899	68	18	24	Non forato
00900	68	18	24	Forato

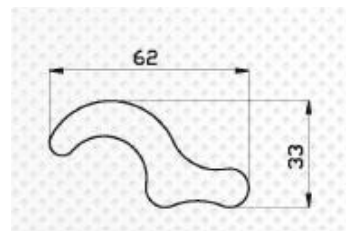
## DENTE ELEFANTE

DENT

TOOTH

HAKK

GARRA



Articolo	Descrizione Description
00054	Dente elefante

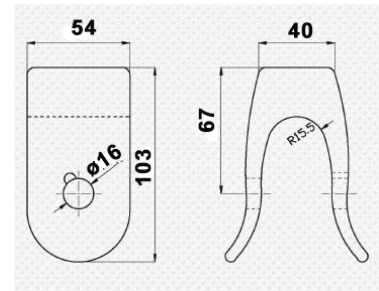
## FORCELLA RIBALTABILE

CHAPE BASCULANTE

FORK FOR TIPPING TRAILERS

KIPPLAGER

HORQUILLA BASCULANTE



Articolo	Descrizione Description
00084	Forcella ribaltabile

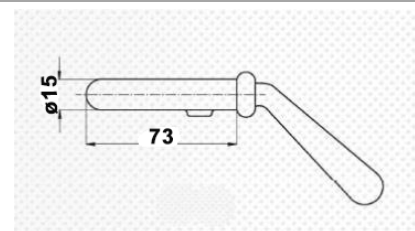
## CHIAVISTELLO PER FORCELLA RIBALTABILE

CHAPE BASCULANTE

FORK FOR TIPPING TRAILERS

KIPPLAGER

HORQUILLA BASCULANTE



Articolo	Descrizione Description
00085	Chiavistello per forcella ribaltabile Turnover bolt

## MANIGLIA RONDELLA COPPIGLIA PER CHIOCCIOLA DA 60 MM

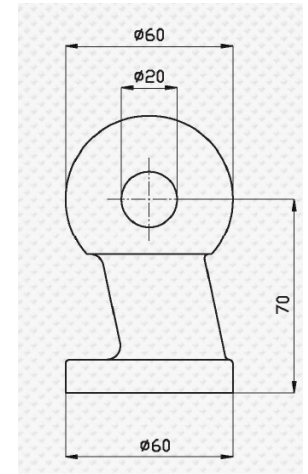
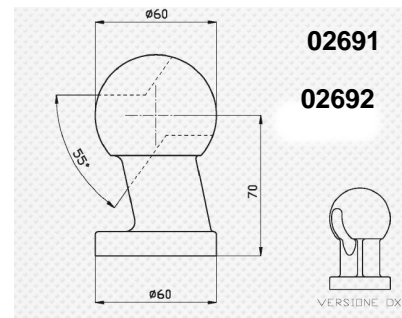
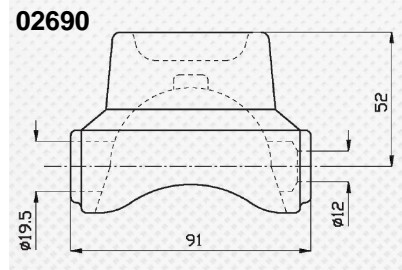
SOCKET AND BALL Ø 60 MM

KIPPLER - SATZ Ø 60 MM

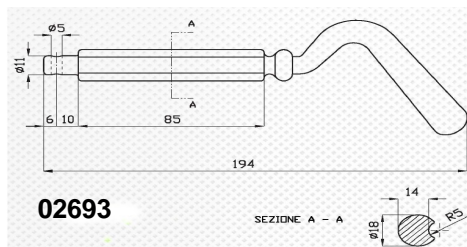
KIT REMOLQUE Ø 60 MM



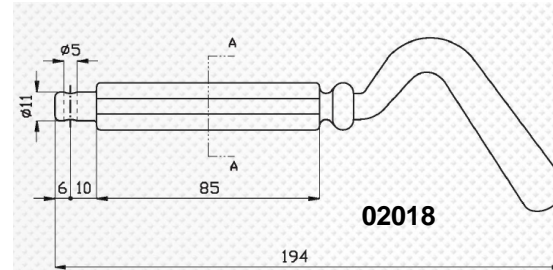
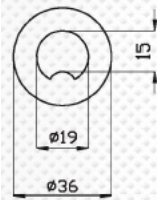
Articolo	Descrizione Description	Lato Size
02692	Sfera da Ø 60 mm con asola Ball Diameter 60 mm	Sx
02691	Sfera da 60 mm con asola Ball diameter Ø 60 mm	Dx
01349	Sfera da 60 mm Sphere Ø 60 mm	-
02693	Maniglia rondella da Ø 60 un'asola Latchlock and washer Ø 60 mm	-
02690	Chiocciola da Ø 60 mm Socket diameter: 60 mm	-
02018	Maniglia e rondella Ø 60 mm due asole Latchlock and washer Ø 60 mm	-



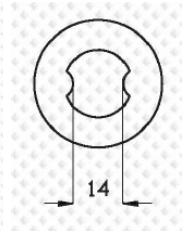
01349



02693



02018



## MANIGLIA RONDELLA COPPIGLIA PER CHIOCCIOLA DA 78 MM

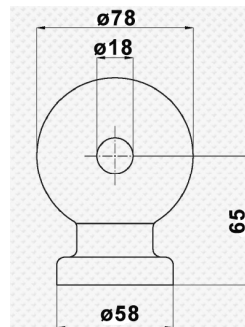
SOCKET AND BALL Ø 78 MM

KIPPLER - SATZ Ø 78 MM

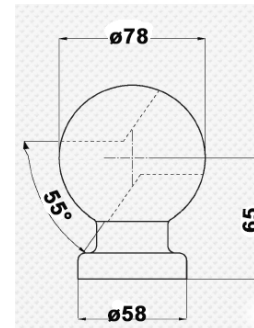
KIT REMOLQUE Ø 78 MM

Articolo	Descrizione Description
00090	Sfera da 78 mm Sphere diameter 78 mm
00091	Maniglia da 78 mm Latchlock 78 mm
00092	Sfera da 78mm ad asola Sphere Ø 78 mm locking by buttonhole
01350	Chiocciola Ø 78 mm Socket Ø 78 mm

00090

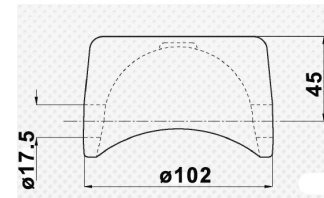
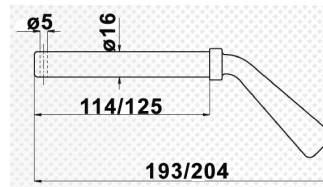


00092



01350

00091



## PERNO SMUSSATO

PIVOT

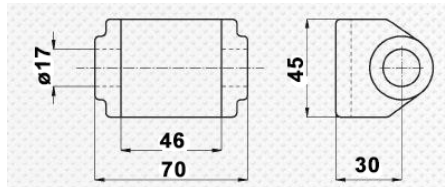
Articolo	Descrizione Description	Ø mm
00816	Perno smussato Pivot	16





**CAVALLOTTO RIBALTIBILE NORMALE**  
NORMAL FOLDING TRESTLE

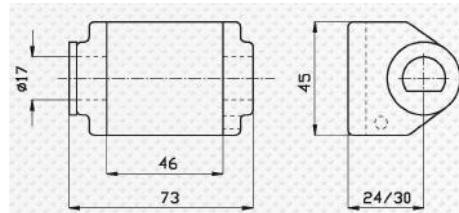
Articolo	Descrizione Description
00819	Cavallotto ribaltabile normal folding trestle



**CAVALLOTTO STOPPED DX/SX**

BLOCAGE TYPE STOPPED  
LOCKING DEVICE STOPPED  
KIPLAGER STOPPED  
HORQUILLA DE BLOQUE STOPPED

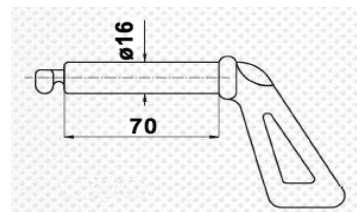
Articolo	Descrizione Description
00820	Cavallotto Stopped Dx Right trestle stopped type
00820/S	Cavallotto Stopped Sx Left trestle stopped type



**MANIGLIA PER CAVALLOTTO STOPPED**

VERROU BLOCAGE  
HANDLE FOR STOPPED TOOL COUPLING FORK  
SPERRSTIFT ZU KIPLAGER STOPPED  
MANGO PARA HORQUILLA DE BLOQUE STOPPER

Articolo	Descrizione Description
00821	Maniglia cavallotto stopped Handle for trestle type stopped



**BOCCHETTA PER GRANO CON FLANGIA**

DRAIN-PIPE FOR CORN WITH FLANGE

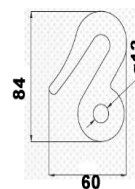
Articolo	Descrizione Description
01722	Bocchetta per grano con flangia Drain-pipe for corn with flange



**GANCIO PER CATENA**

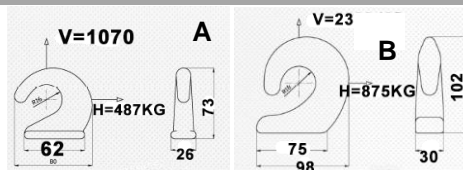
CROCHET BOUT CHAINE  
END HOOK-CHAIN  
ENDEKETTEHAKEN  
GANCHO FIN CADENA

Articolo	Descrizione Description
00907	Gancio per catena End hook-chain



**GANCI DI TRAINO PER AUTOCARRI**

CROCHETS POUR CAMIONS  
HOOK FOR TRUCKS  
SEIL HAKEN  
GANCHO DE TIP



Articolo	Descrizione Description	V Kg	H kg	Foto Picture
01727	Tipo leggero Towing hitch for trucks light type	1070	487	A
01728	Tipo medio Towing hitch for trucks medium type	2300	875	B

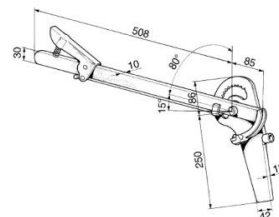
## LEVA FRENO A MANO TIPO "CUNA"

LEVIER FREIN A MAIN "CUNA"

HAND BRAKE LEVER "CUNA"

HANDBREMSHEBEL "CUNA"

PALANCA DE FRENO MANUAL "CUNA"



Articolo	Descrizione Description
00088	Leva Freno a Mano "Cuna" Brake lever type "CUNA"

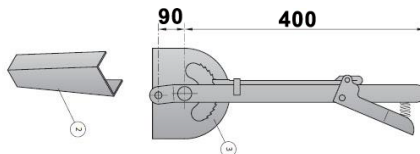
## LEVA FRENO PARCHEGGIO

LEVIER FREIN STATIONNEMENT

PARKING BRAKE LEVER

HANDBREMSHEBEL

PALANCA FRENO APARCAMIENTO



Articolo	Descrizione Description
00089	Leva Freno parcheggio parking brake lever

## LEVA FRENO TIPO CORTO CON FORCELLA

LEVIER FREIN TYPE COURT AVEC FOURCHE

BRAKE LEVER SHORT TYPE

KURZER HANDBREMSHEBEL MIT

PALANCA FRENO TIPO CORTO CON HORQUILLACERRADA

Articolo	Descrizione Description	Lunghezza Lenght
00093	Leva freno tipo corto Brake lever short type	275mm
00094	Leva freno tipo lungo Brake lever long type	345mm



## LEVA FRENO TIPO CORTO CON CARRUCOLA

LEVIER FREIN TYPE COURT FERMEE ET POULIE

BRAKE LEVER WITH PULLEY

KURZER HANDBREMSHEBEL MIT

PALANCA FRENO TIPO CORTO CON HORQUILLA CERRADA Y PLEA

Articolo	Descrizione Description	Lunghezza Lenght
00095	Leva freno tipo corto con carrucola Brake lever long type with fork	275mm
00096	Leva freno tipo lungo con carrucola Brake lever long type with fork	345mm



## MANOPOLA PER LEVA FRENO

POGNEESS

KNOBS FOR BRAKE LEVER

HANDGRIFFE

EMPUNADURAS

Articolo	Descrizione Description
00903	Monopola per leva freno Knobs for brake lever



## CARRUCOLA CON PERNO

POULIE AVEC PIVOT

PULLEY WITH PIN

NYLONROLLE MIT BOLZEN

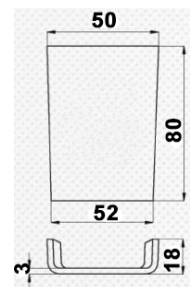
POLEA CON PERN

Articolo	Descrizione Description	Materiale Material
00904	Carrucola con perno Knobs for brake lever	Nylon
00905	Carrucola con perno Knobs for brake lever	Ferro



## FASCETTA LEVA FRENO

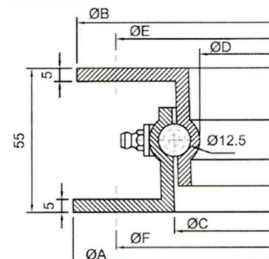
BRIDE POUR LEVIER FREIN  
HAND BRAKE LEVER SUPPORT  
HALTERUNG FÜR HANDBREMSHEBEL  
SOPORTE PARA PALANCA DE FRENO



Articolo	Descrizione Description
00087	Fascetta leva freno Brake lever box

## RALLE

BALL BEARING SLEWING RINGS  
ROND D'AVANT TRAIN A BILLES  
KUGELLENKRANZE



Articolo	Dimensioni Ø Dimension Ø							Carico Assiale Axial Load Kg	Peso Weight Kg
	A	B	C	D	E	F	S		
00810	400	400	321	300	375	375	12,5	750	7
00811	500	500	421	400	475	475	12,5	1000	9
00812	600	600	510	486	575	575	12,5	1500	20
00813	700	700	610	587	675	675	14	2000	24
00814	800	800	710	688	775	775	14	2500	27
00815	900	900	810	786	875	875	14	3500	32
01446	1000	1000	910	888	975	975	14	4000	35

## GANCIO AD OCCHIO

CROCHETS A OEIL  
EYE HOOKS  
LASTHAKEN  
GANCHOS A OJO

Articolo	Descrizione Description	Portata Capacity Kg
00220	Gancio ad occhio Eye hook	250
00221	Gancio ad occhio Eye hook	500
00222	Gancio ad occhio Eye hook	1000
00223	Gancio ad occhio Eye hook	1600
00224	Gancio ad occhio Eye hook	2500
00225	Gancio ad occhio Eye hook	4000



## GANCIO AD OCCHIO CON CHIUSURA

CROCHETS A OEIL  
EYE HOOKS WITH SAFETY  
DHREHBARER SICHERUNGSHAHEN

Articolo	Descrizione Description	Portata Capacity Kg
00872	Gancio ad occhio con chiusura eye hooks with safety	250
00873	Gancio ad occhio con chiusura eye hooks with safety	500
00874	Gancio ad occhio con chiusura eye hooks with safety	1000
00875	Gancio ad occhio con chiusura eye hooks with safety	1600



## MAGLIE RAPIDE PER CATENE

MAILLON RAPIDE

CHAIN QUICK LINKS

KETTENNOTGLIEDER

ESLABONES RAPIDOS

Articolo	Descrizione <i>Description</i>	Ø mm	Portata <i>Capacity Kg</i>
01920	Maglie per catene <i>links for chain</i>	6	400
01921	Maglie rapide catene <i>links for chain</i>	8	800
01922	Maglie rapide catene <i>links for chain</i>	10	1200



## MOSCHETTONI ZINCATI

MOSQUETON ZINGUÉ GALVANIZED

SPRING-CLIPS

VERZINKTE SCHNALLENFEDER

GANCHOS DE RESORTE CINCADAS

Articolo	Descrizione <i>Description</i>	Ø mm	Portata <i>Capacity Kg</i>
05785	Moschettoni zincati <i>Galvanized spring-clip</i>	6x60	-
05786	Moschettoni zincati <i>Galvanized spring-clip</i>	8x80	-
05787	Moschettoni zincati <i>Galvanized spring-clip</i>	10x100	-

